



TECHNOLOGY OF DIGITAL MAP CREATION IN ARSGIS 9.3

(Digital technology mapping techniques in ArcGIS 9.3)

M. X. Bobokalonov

Samarkand State Institute of Architecture and Construction
bobokalonov-m90@mail.ru

ANNOTATION

This article outlines the principles of working with Arc GIS 9.3, the technology for creating digital mapping, and for selecting a specific location as a research site, the database is incorporated.

Keywords: Arc GIS 9.3 software, map, geographic data, attribute data, digital map, Arc Catalog, Arc Map.

INTRODUCTION

At present, information technologies in all spheres of life in the country, including settlements, agricultural enterprises, have developed to such an extent that the improvement of cadastral work has become a requirement of the times. Creating and working with digital maps is important. New state-of-the-art tools and software will be needed to create digital maps. In particular, the Arc GIS 9.3 program currently in production is very useful for creating new digital maps. Working with maps created using this program further expands the user's capabilities. Therefore, improving the mapping work using this program is a requirement of the time.

Arc GIS 9.3 was developed by ESRI, which allows objects to work together with geographic data and attribute data.

It is very convenient to compile and store the database in Arc GIS 9.3. To create digital maps in Arc GIS 9.3, we need to do the following.

- The ground is photographed from the air by a camera of the aeronautical organization;
- Photographs are taken and deciphered;
- zoom images into ArcGIS;
- Depending on the decoded images are drawn in ArcGIS, as well as data is entered.

The Arc GIS program consists of two main parts.

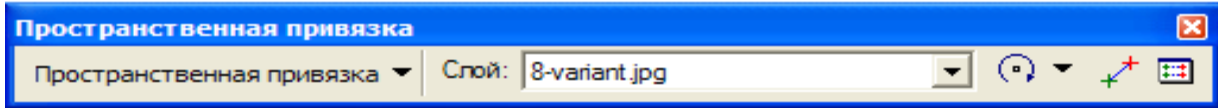
Arc Map 2.Arc Satalog

Section 1 Arc Map-Used to work with geographic objects with attribute data.

To launch the Arc Map from the work window, that is, the program, it is brought to the working position by left-clicking on the Arc Map from the work window.

Click the Add button and the required information will appear in the Arc Map window.

Then open the Arc Map program (Figure 1) and the right-hand window;



Press the button to set the coordinate heights given to the rectangle of the variant 2- (Fig.)

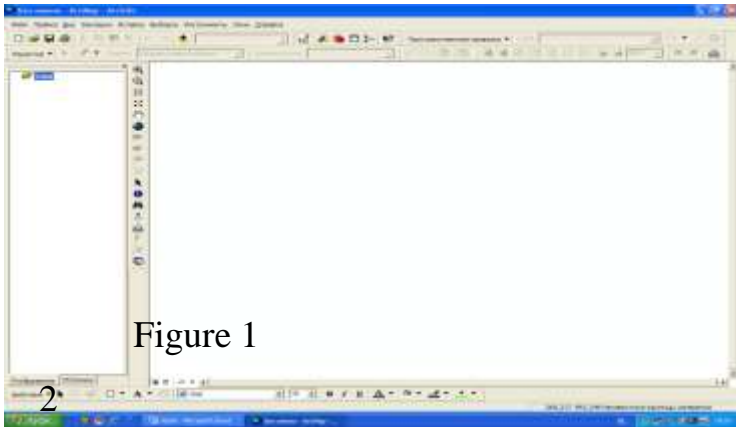
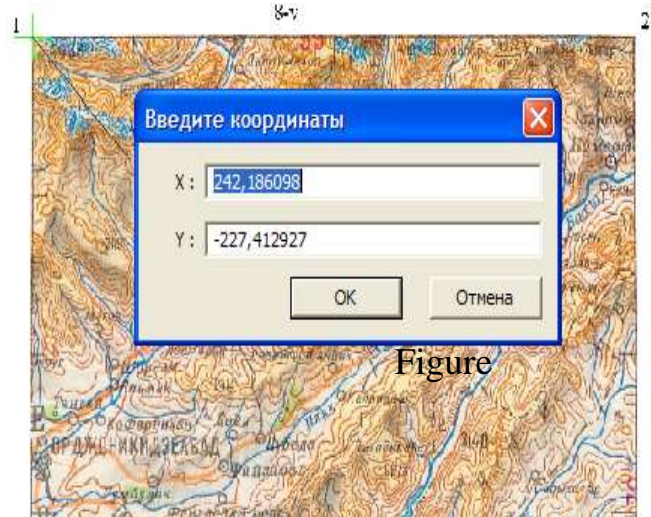
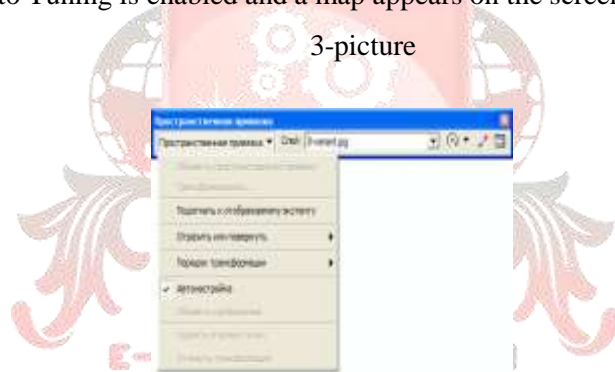


Figure 1



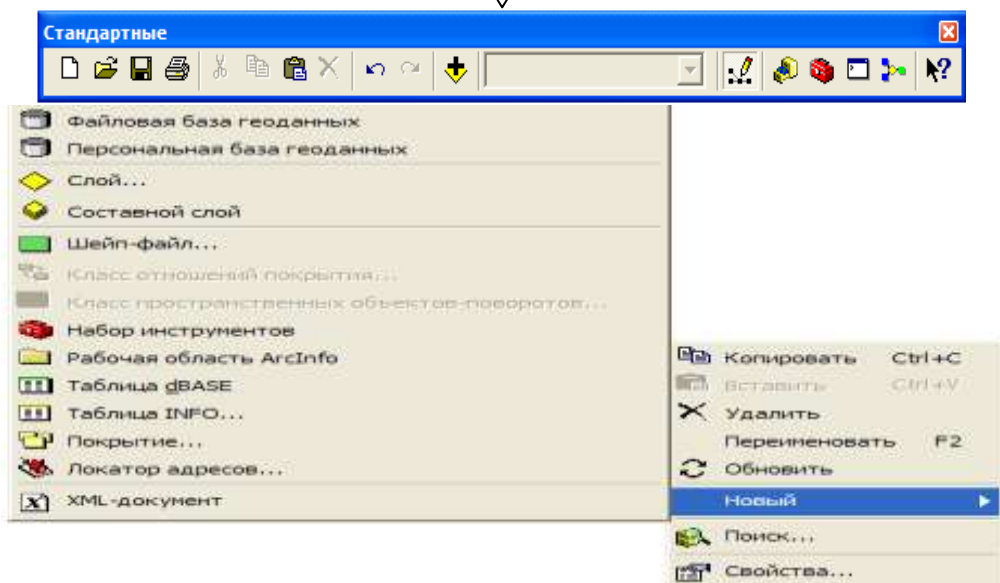
Figure

Auto Tuning is enabled and a map appears on the screen 3- (picture)



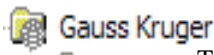
3-picture

2. Section Arc Catalog-this is data management

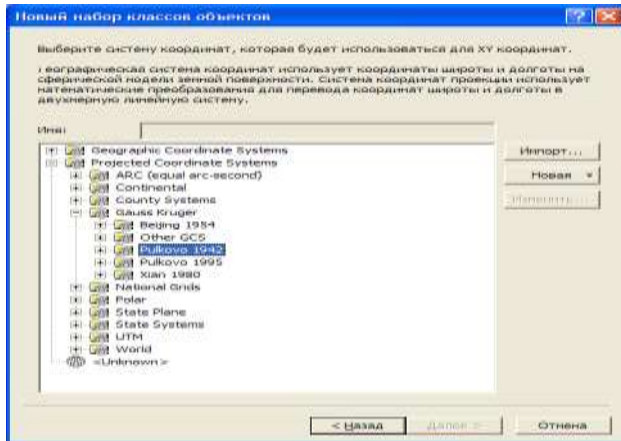


The Arc Catalog window opens **Персональная база** is created and from

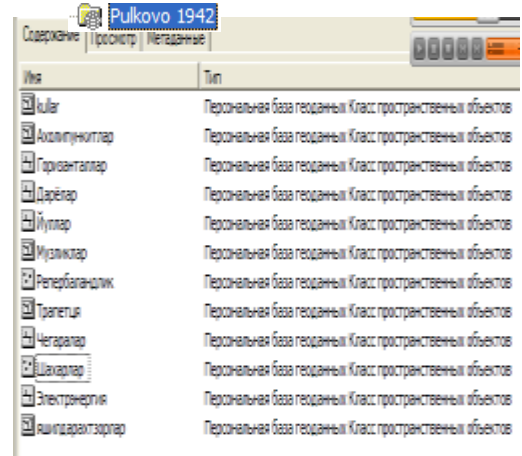
Новый набор классов объектов



The coordinate system selected from the system is taken 4- (Figure) and the required data is entered (Figure 5).



4-picture



5- picture

The Arc Map window opens when you exit the Arc Catalog window.

The editor panel opens



is turned on, selected from the editor panel, and the desired layer is selected, and data is created using these characters.

The required information is entered into the linear objects. For example, we can take roads, hydrography, boundaries, horizontals, power lines, gas pipelines and other linear objects.

Below is a map of agricultural, urban and rural settlements prepared in Arc GIS 9.3 (Figure 6).

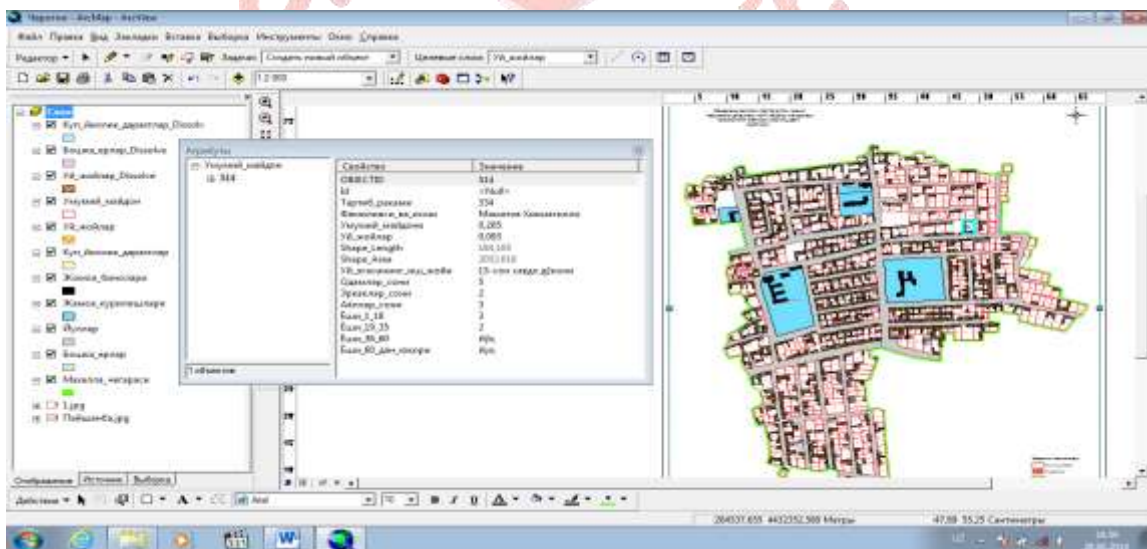


Figure 6

In conclusion, it should be noted that the use of Arc GIS software in the creation of high-resolution digital maps today saves the user time and simplifies the work performed. The introduction of these digital maps into production will play an important role in increasing productivity.

REFERENCES

1. Safarov E.Yu. Geographical information systems.-Tashkent., University, 2010.
 2. 2. Mirzaliev T., Qoraboev J. Design and creation of maps.-Tashkent., «Interpretation», 2007.
 3. 3. Mirzaliev T. Cartography.-Tashkent., University, 2006
-

