

STUDENT STUDY ANALYZER

¹Vaishnavi H. Patil, ²Shaarika R. Shaikh, ³Tejas R. Kellurkar, ⁴Ketan S. Bhogshetti, ⁵Sameer B. Shaikh,
Prof. T. L. Patil⁶

Student, Computer Engineering Department, A G Patil Polytechnic Institute, Solapur, Maharashtra^{1,2,3,4,5},
Project Guide Computer Science and Engineering Department, A.G. Patil Polytechnic Institute, Solapur,
Maharashtra⁶

ABSTRACT

Academic management is when a group of people and resources work together to plan, organize, strategize, and put in place structures to run an educational system, these all-categorized works help in minimizing efforts. This application allows you to access the courses for teachers and students. The information maintenance of student details, course details, fee structures, syllabus, General Videos, Lectures, online fees, grades, assignments etc. as it is based on firebase database (Framework).

In general, there are various platforms that provide uploading student assessment. This application provides an additional feature which allows you to track the actual count of students who access and outlook the assessment.

In an application a teacher or faculty can analyze every student of the department for that academic year.

The application is easily accessible for each and every end user Firebase Database (Framework) Platform developed by Google. Its called a STUDENT STUDY ANALYZER and it has a lot of features, like apps, student achievement assessments, and more.

Keywords: Data Analysis, Fee Payment method.

INTRODUCTION

It is an android application which provides an online environment for course interactions. Engaging Video Lessons, Personalized Learning. Creating and assisting an orderly environment in the classroom and increasing meaningful academic learning. This application helps educational institutions especially academy or collages in various ways, such as a storing data, maintain student assessment, analyzing academic data and improving communication. The main idea is to provide a data analytical part which provides faculties to track, receive and verify students assessment work. This helps to simplify Fee Collection where students can pay their fees through Razor pay API. Getting started with Analytics is easy. Just add the Firebase SDK to your new or existing app, and data collection begins automatically. You can view analytics data in the Firebase console within hours.

An area for faculty posting of class materials such as course syllabus and handouts.

An area for student posting particular assignments or assessment. A chat tool allowing synchronous communication among class students and faculties.

In addition, This app is typically integrated with framework (Database) in the institute so that students enrolled in a particular course are automatically registered in the application.

LITERATURE SURVEY

The user can easily access and perform the operations. In this way any end user can maintain the system. The teacher can utilize the concept of data analysis and can track the records of student assessments. Students can upload and view the assessments. Students can get their academic related updates via chat.

The responses of students who accessed the assessment gets stored in the firebase. Here, teachers can easily classify between the students who viewed the assessment and the one who uploaded the assessment.

Data analysis can be categorized into two parts which is:

Number of students who accessed the given Assessment:

The assessment uploaded by teacher using upload module in teacher console exhibits in the E-learn module of the student console.

Number of students who Submitted the given Assessment:

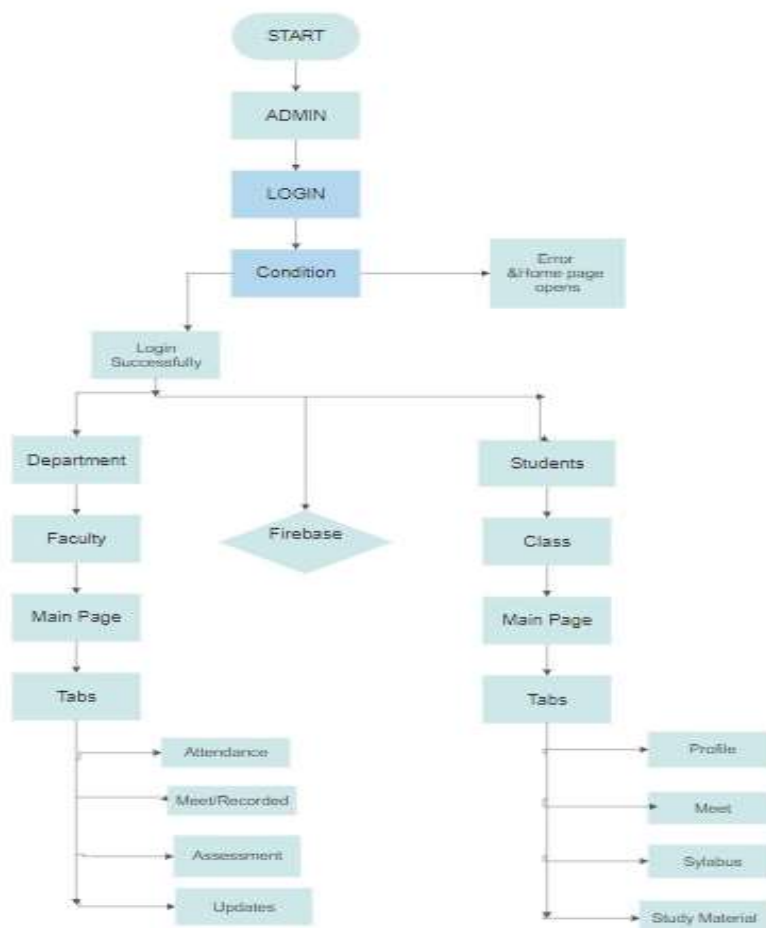
The assessment uploaded by students using the upload module in student console is displayed in the E-learn module of teacher console where the teacher can click on the view button and access the actual count of students who submitted the assessment.

PROPOSED SYSTEM ARCHITECTURE

This project deals with the various functionalities in Academic Management process. The main objective is to carry out a conventional process to system. In our existing system contains a many operations registration, student search, fees, records, performance of the student etc. All these activity takeout manually by Faculty.

In our model, it deals with the operations in system. For example, when students fill the registration form the record is stored in the database. Student information is displayed and fetched from database and Admin monitors and retrieves this information.

- All these functionalities are carried out by API and all modules are interacted to each other .



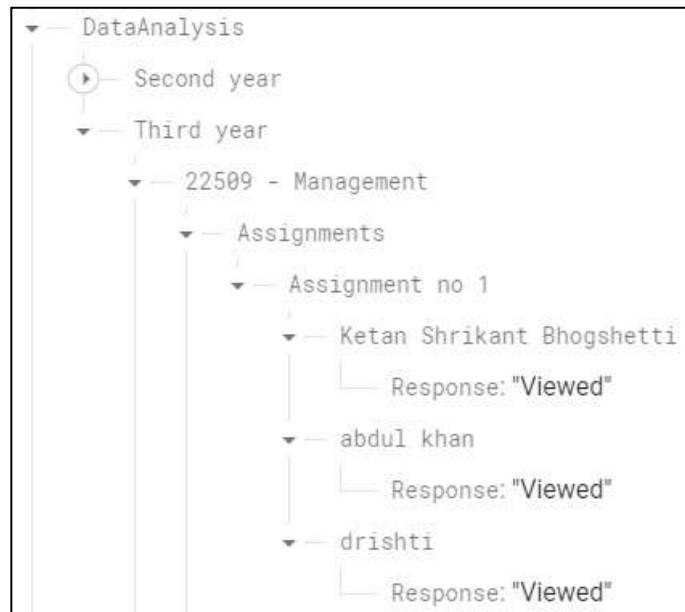
RESULT

How Data Analysis works:

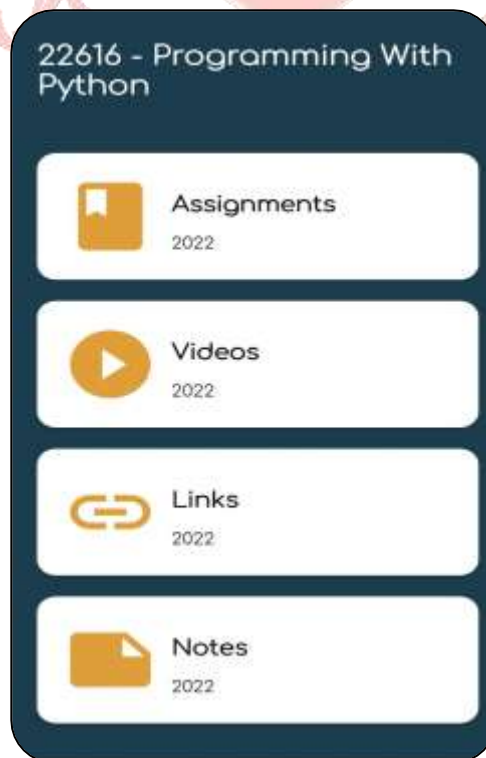
When student click on assignment. DataAnalysis node Departments are Portioned under this node Under that, subjects wise partition is being done Assignments notes and videos are categorized under each subject. For example Under the Assignments node, Assignment no 1 is being displayed and their specific response gets collected under the assignment node as "viewed" If the assignment is being accessed

- This Activity Contains Student Response and data analysis. (accessed student list and non- accessed student list).
- As you can see, The nodes that contain the student names are fetched here.
- You can download Excel file to keep record .

, Videos and
Data



- Assignments
Notes are included in
analysis





CONCLUSION

1. Centralized database maintenance
2. Easy to access.
3. To develop an educational Android application using firebase to provide data analysis to reduce the efforts of teachers. To manage the details of Faculty, Students as per their Course.
4. Using this application faculty can easily identify and track students activity.

REFERENCES

- [1] www.firebase.com
- [2] www.developer.android.com
- [3] <https://razorpay.com/integrations>